

Fuchu International House

【Access】 Adress:2-41,Saiwai-cho,Fuchu-shi,Tokyo 183-0054 Japan

○From JR Chuo-Line Kokubunji station south exit: take the bus bound to Fuchu station, get off at “Harumi-cho” bus stop, and 6-minute walk.

○From Keio-line Fuchu station north exit: take the bus bound to Kokubunji station, get off at “Harumi-cho” and 6 minute-walk.

○From JR Chuo-Line Musashi-Koganei station: take a bus bound to Fuchu station, get off at “Tenjin-cho Yochien mae” and 4-minute walk.

○From Musashino line Kita-Fuchu station, 15-minute walk.

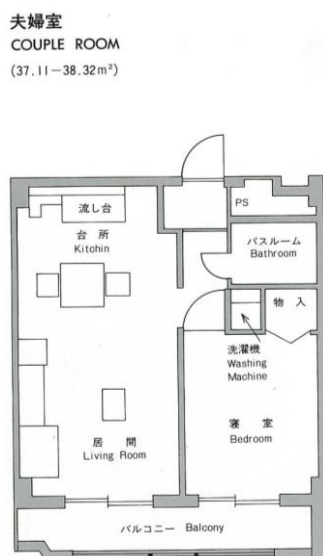
【Type of Room】

Status of the Resident	Type	Quantity	Area (㎡)
Foreign Student	Single Room	40	18.00～20.38
	Couple Room	4	37.11～38.32
	Family Room	4	55.66
Foreign Researcher	Single Room	6	18.00～20.38
	Couple Room	1	37.11～38.32
	Family Room	2	55.66
Tutor	Couple Room	1	38.32

【Individual Room Fixtures】

Each room is furnished with a desk, chair, bookshelf, bed, chest of drawers, refrigerator, dining table, dining chair, unit bathtub, sink, cooking stove, wall cupboard, air conditioner, shoe cupboard, curtain, washing machine, etc. (But all Single Rooms do NOT have a washing machine. Please use the communal washing machines in the Laundry Rooms.)

【Plan of the house】



【Internet】

To use internet in your room, please contact and sign contract with internet operators on your own. There are choices of operators. Details of each operator (price, service, etc.) will be informed during the orientation upon your move-in.